



■ **Consilium-Medicum**

<http://www.consilium-medicum.com>

<http://www.medvestnik.ru/SDelo/2003/06/index.html>

■ **BioMedCentral Nursing**

<http://www.biomedcentral.com/bmcnurs/>

■ **The Free Medical Journals Site -1340**

<http://www.freemedicaljournals.com/>

■ **Highwire press free online full-text articles**

<http://highwire.stanford.edu/lists/freeart.dtl>

■ **Highwire press free access to developing economies**

<http://highwire.stanford.edu/lists/devecon.dtl>

---

---

---

---

---

---

---

---

<http://news.yandex.ru/health.html>

■ **Doctor's Guide to medical and other news**

<http://www.docguide.com/>

■ **The Congress Resource Centre (CRC)**

<http://www.docguide.com/crc.nsf/web-bySpec>

■ **PapersINVITED.com**

<http://papersinvited.com/>

---

---

---

---

---

---

---

---

■ **Centerwatch Clinical Trials Listing Service**

<http://www.centerwatch.com/>

■ **AIDSinfo Clinical Trials**

[http://www.aidsinfo.nih.gov/clinical\\_trials/](http://www.aidsinfo.nih.gov/clinical_trials/)

■ **Current Controlled Trials**

<http://www.controlled-trials.com/>

---

---

---

---

---

---

---

---



<http://www.rusmedserv.com/>  
<http://www.eurasiahealth.org>  
**Medscape**  
<http://www.medscape.com>

---

---

---

---

---

---

---

---

---

---

События, 29 января 2009 г.  
**Новая Зеландия признана Евразией**  
 29 января 2009 г. Новая Зеландия признана Евразией в номинации «Лучший регион Евразии» на церемонии вручения премии «Триумф Евразии» в Лондоне. Премия «Триумф Евразии» вручается ежегодно в Лондоне. В номинации «Лучший регион Евразии» участвуют все страны Евразии. В этом году в номинации «Лучший регион Евразии» участвовали 10 стран: Австралия, Новая Зеландия, Южная Африка, Индия, Китай, Япония, Республика Корея, Тайвань, Филиппины и Таиланд.

---

---

---

---

---

---

---

---

---

---

**(2)**

События, 29 января 2009 г.  
**Медсестринское дело**  
 29 января 2009 г. Премия «Триумф Евразии» в номинации «Лучшее медсестринское дело» вручена в Лондоне. Премия «Триумф Евразии» вручается ежегодно в Лондоне. В номинации «Лучшее медсестринское дело» участвуют все страны Евразии. В этом году в номинации «Лучшее медсестринское дело» участвовали 10 стран: Австралия, Новая Зеландия, Южная Африка, Индия, Китай, Япония, Республика Корея, Тайвань, Филиппины и Таиланд.

---

---

---

---

---

---

---

---

---

---

## Web-

- **Antibiotic.ru -**

*http://www.antibiotic.ru/*

- *http://www.cardiosite.ru/*

- *http://www.diabet.ru*

- **. Ru**

- *http://www.sestra.ru/*

---

---

---

---

---

---

---

---

## Web- /

- *http://www.healthquality.ru*

- *http://www.cochrane.ru*

- *http://www.aiha.com*

---

---

---

---

---

---

---

---

- E-mail ( )

- newsgroups ( )

- (mailing list)

- FTP -

- (WWW)

- /Archiving

- on-line/Open Access

---

---

---

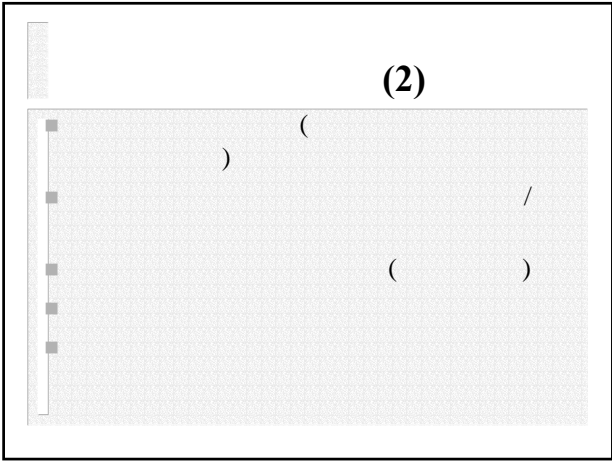
---

---

---

---

---



---

---

---

---

---

---

---

---



---

---

---

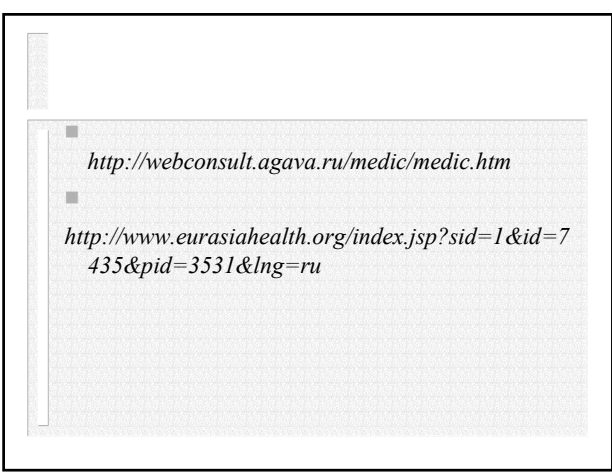
---

---

---

---

---



---

---

---

---

---

---

---

---

<http://www.telemednet.ru/>

<http://www.telemed.ru/>

- **Swinfen Charitable Trust**

<http://www.swinfencharitabletrust.com/>

<http://www.telemed.org.ua/TK/tkmain.html>

---

---

---

---

---

---

---

---

- **CME** (continuous medical education) -
- **Medical Rounds** ( )
- **Simulation** ( )
- **Interactive on-line courses** ( )
- **On-line exams** ( - )

---

---

---

---

---

---

---

---

(2)

<http://rusmg.ru/for doctor/reanimation/test01.shtml>

<http://www.infamed.com/test0/index.html>

[http://medicine.onego.ru/medkar/proj/tacis/a1508\\_a.shtml](http://medicine.onego.ru/medkar/proj/tacis/a1508_a.shtml)

- **Interactive Patient**

<http://nt.media.hku.hk/InteractivePatient/medicus.htm>

---

---

---

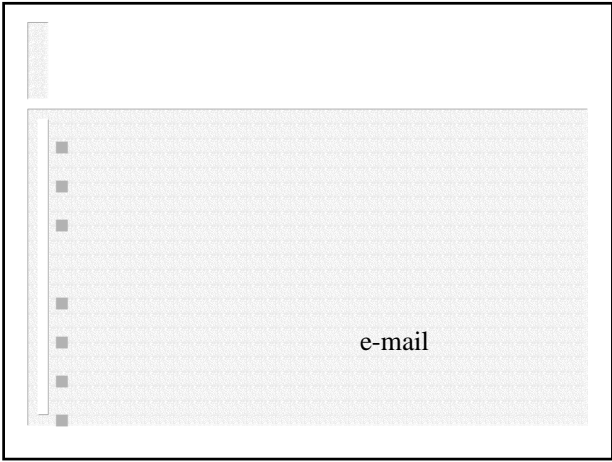
---

---

---

---

---



---

---

---

---

---

---

---

---



---

---

---

---

---

---

---

---



---

---

---

---

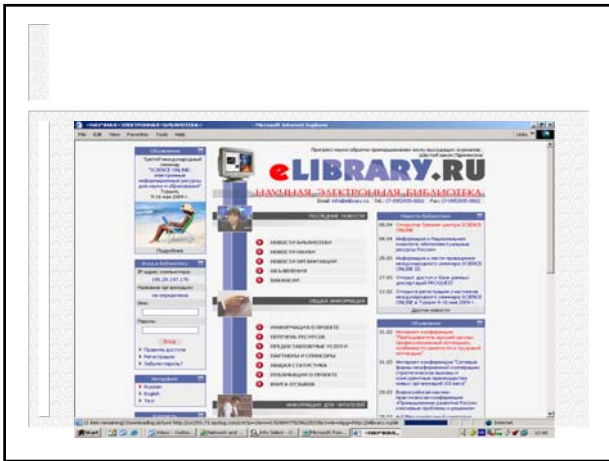
---

---

---

---





---

---

---

---

---

---

---

---

*Американский Международный Союз  
Здравоохранения  
Ирина Ибрагимова  
ibra@zadar.net  
2005*

---

---

---

---

---

---

---

---

- Directories /
- Evaluated subject directories/  
“ ”
- Search Engines /
- Meta-search Engines /
- Invisible Web /

---

---

---

---

---

---

---

---

- Mailing lists /
- Alert services /

---

---

---

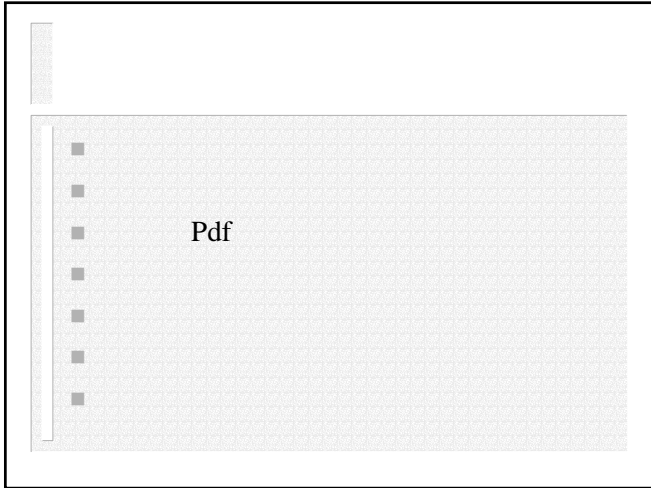
---

---

---

---

---



---

---

---

---

---

---

---

---



---

---

---

---

---

---

---

---



---

---

---

---

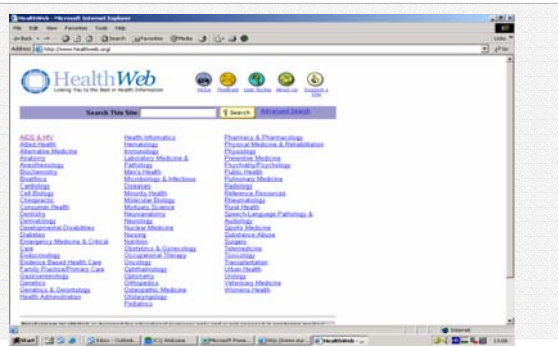
---

---

---

---

# Health Web



---

---

---

---

---

---

---

---

---

---

- **Google**  
<http://www.google.com>
- **Yandex**  
<http://www.yandex.ru>
- **Altavista**  
<http://www.altavista.com>
- **Search Engines Worldwide**  
<http://home.inter.net/takakuwa/search/search.html>

---

---

---

---

---

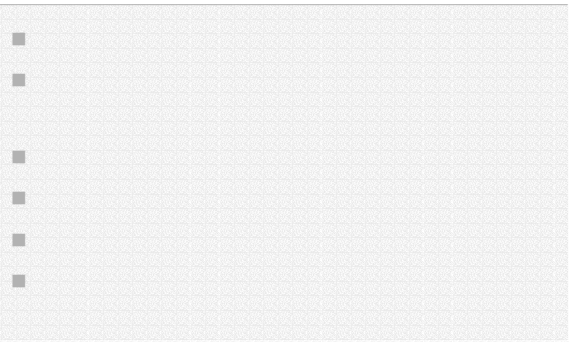
---

---

---

---

---



---

---

---

---

---

---

---

---

---

---

## Google – (basics)

- “AND” (“ “)
- - (+)
- 
- 
- ( )
- 

<http://directory.google.com/>

---

---

---

---

---

---

---

---

## Google

<http://www.google.com/>

- Cached Links
- Dictionary Definitions
- File Types
- I'm Feeling Lucky
- News Headlines
- Similar Pages
- Site Search
- Spell Checker
- Who links to you?
- Web Page Translation

---

---

---

---

---

---

---

---

## Google –

- - 
  - 
  -
- (10/20/50/100)
- SafeSearch Filter

---

---

---

---

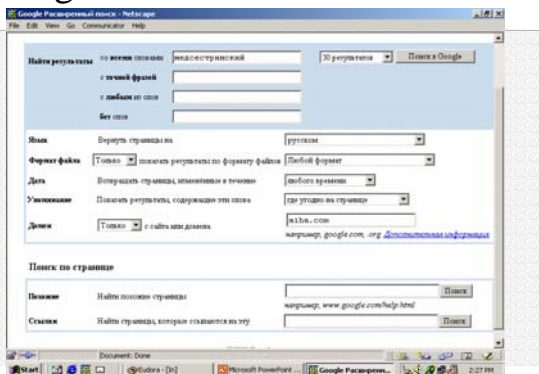
---

---

---

---

# Google –



---

---

---

---

---

---

---

---

---

---

- **ndex**  
*http://www.yandex.ru*
- **Google**  
*http://www.google.com/*
- **Rambler**  
*http://www.rambler.ru*
- **!**  
*http://www.aport.ru*

---

---

---

---

---

---

---

---

---

---

/

---

---

---

---

---

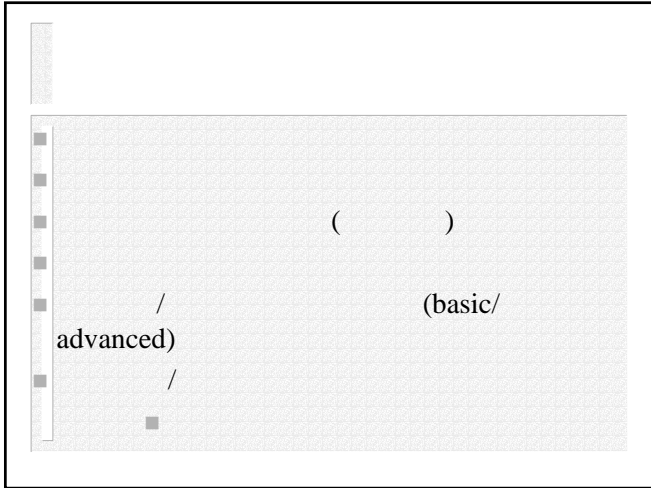
---

---

---

---

---



---

---

---

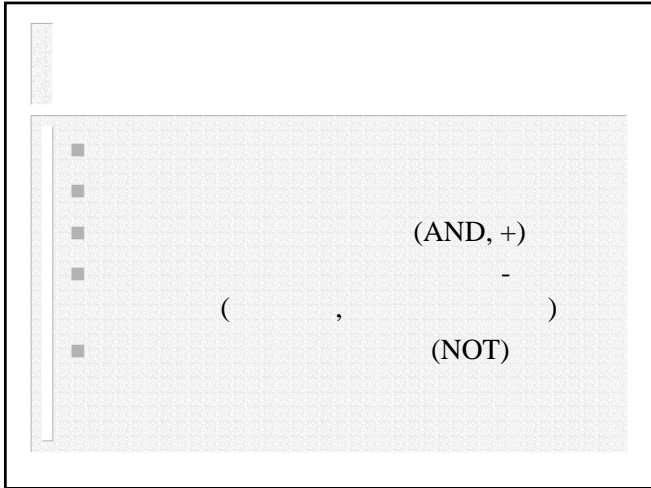
---

---

---

---

---



---

---

---

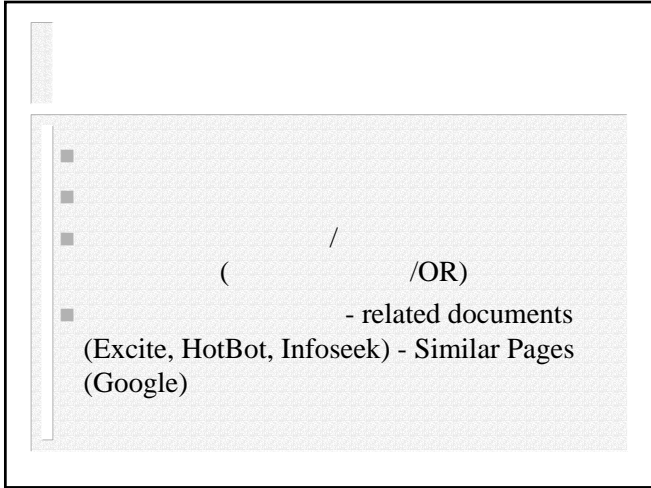
---

---

---

---

---



---

---

---

---

---

---

---

---

## Meta-search Engines /

- **Ixquick**

*<http://ixquick.com>*

- **ez2www**

*<http://ez2find.com/>*

---

---

---

---

---

---

---

---

- 

- 

- 

- 

---

---

---

---

---

---

---

---

- **Med Hunt**

*<http://www.hon.ch/MedHunt/>*

- **Medical World Search \$**

*<http://www.mwsearch.com>*

- 

- **MEDSEEK.BY**

*<http://medseek.by/>*

---

---

---

---

---

---

---

---

■ **SUMSearch**

<http://sumsearch.uthscsa.edu/cgi-bin/SUMSearch.exe?>

■ **TRIP**

<http://www.tripdatabase.com/>

---

---

---

---

---

---

---

---

■ **FindArticles**

<http://www.findarticles.com>

■ **MagPortal**

<http://www.magportal.com>

■ **Google Scholar**

<http://scholar.google.com/>

---

---

---

---

---

---

---

---

■ **BoardReader**

<http://www.boardreader.com/>

■ **DayPop**

<http://www.daypop.com/>

---

---

---

---

---

---

---

---



---

---

---

---

---

---

---

---



---

---

---

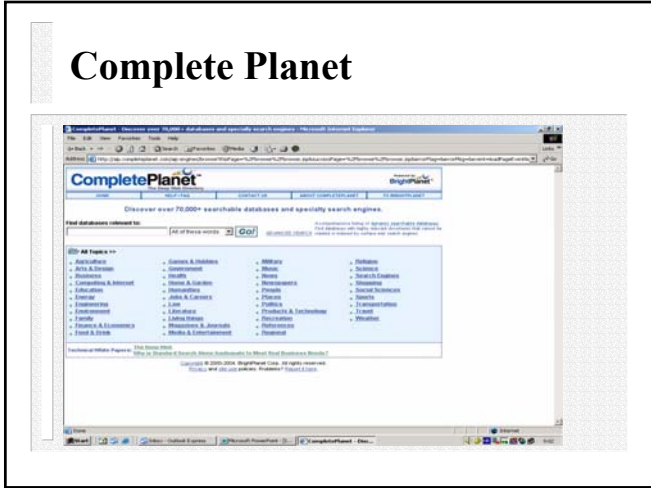
---

---

---

---

---



---

---

---

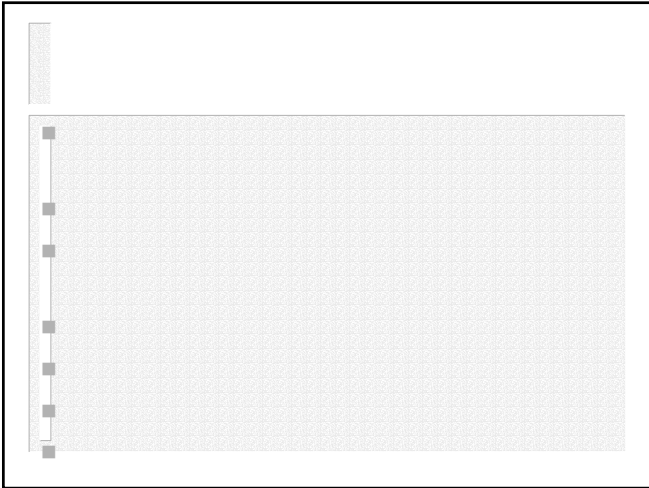
---

---

---

---

---



---

---

---

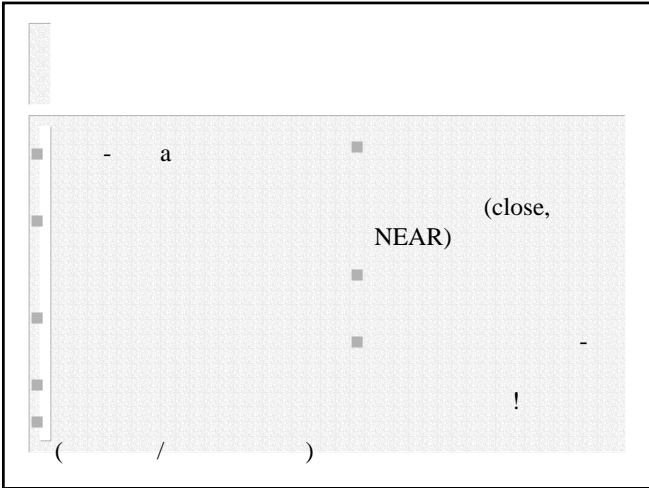
---

---

---

---

---



---

---

---

---

---

---

---

---

ibra@zadar.net  
2005

3-4 ( , ) ( ),

(  
WWW )

(search engine )  
( )

“ “ ” ( )  
“( )

-

(1-2 )

( )

,

( , , , )

( , , )

,

**MEDLINE - PubMed**

ibra@zadar.net

2005

---

---

---

---

---

---

---

---

**MEDLINE**

- MEDLINE -
- 67% -
- 70
- 1966 . 12 4300
- -
- 120
- <http://www.pubmed.com>

---

---

---

---

---

---

---

---

- TI -
- TO -
- AU - ( )
- AD -
- SO -
- ISSN
- PY -
- AB -
- MH -
- PT -
- UI - **MEDLINE**

---

---

---

---

---

---

---

---

1)

2)

3)

4)

---

---

---

---

---

---

---

---




---

---

---

---

---

---

---

---

“ ”

mapping

Journals Database

MeSH Database

---

---

---

---

---

---

---

---

- AND

- Details
- Limits

---

---

---

---

---

---

---

---

### Limits

• Use All Fields pull-down menu to specify a field  
 • Boolean operators AND, OR, NOT must be in upper case  
 • If search fields tags are used enclose in square brackets, e.g., rubella [ti]  
 • Search **limits** may exclude PreMEDLINE and publisher supplied citations

**Limited to:**

only items with abstracts  
 All Fields | Publication Types | Ages | Entrez Date | Publication Date | Languages | Human or Animal | Gender | Subsets

From: [ ] [ ] [ ] [ ] To: [ ] [ ] [ ] [ ]

Use the format YYYYMMDD, month and day are optional

---

---

---

---

---

---

---

---

### MeSH -

- 10-12

- 14000 , 18000

Explode

Major Term

---

---

---

---

---

---

---

---



## Therapy, Prevention and Control/ -

- **Substance/Therapeutic use**
- **Disease/Drug Therapy, Prevention and Control, Therapy**
- **1 and 2**
- **Limit**  
*Language*  
*Human*  
*Age group*

---

---

---

---

---

---

---

---

## Therapy Question/

- **Is naprosin used to treat rheumatoid arthritis?**
  - ?
1. NAPROSIN/TU
  2. ARTHRITIS, RHEUMATOID/DT,PC,TH
  3. 1 AND 2
  4. *Limit to Russian and Human*

---

---

---

---

---

---

---

---

## Diagnosis, Screening/

- **Test/ Diagnostic use**
- **Disease/ Diagnosis**
- **1 and 2**
- *limit to language and Human*

---

---

---

---

---

---

---

---

## Diagnosis Question/

- **Is PPD test still reliable in diagnosing pulmonary tuberculosis?** PPD ?
- **PPD** - textword (title or abstract)
- **PPD** - MeSH heading/subheading

---

---

---

---

---

---

---

---

## Search strategy/

1. **ppd**
2. **ppd/DU**
3. **1 OR 2**
4. **PULMONARY TUBERCULOSIS/DI**
5. **3 AND 4**
6. Limits to *Human and Russian language*

---

---

---

---

---

---

---

---

## Etiology Question/

- **What is the harm for you from a co-worker smoking?** ( )
- 1. **OCCUPATIONAL EXPOSURE**
- 2. **ENVIRONMENTAL EXPOSURE**
- 3. **1 OR 2**
- 4. **3 AND TOBACCO SMOKE POLLUTION**
- 5. **4 AND EXP EPIDEMIOLOGIC STUDY CHARACTERISTICS**
- 6. *Limit to English*

---

---

---

---

---

---

---

---

## Prognosis Question/

- Prognosis for patient with Lou Gehrig's Disease ( )

1. **Lou Gehrig OR ALS OR AMYOTROPHIC LATERAL SCLEROSIS/MO,EP**

2. **PROGNOSIS OR MORBIDITY OR MORTALITY**

3. **1 AND 2**

4. *Limit to English, Human*

---

---

---

---

---

---

---

---

( ): "larsson l"

---

---

---

---

---

---

---

---

## Journals Database

- journal of nutrition
- j nutr
- ISSN 0022-3166

---

---

---

---

---

---

---

---

## Citation Matcher

- (Single Citation Matcher )
- (Batch Citation Matcher)

---

---

---

---

---

---

---

---

## Mapping

- MeSH Translation Table
- Journals Translation Table
- Phrase List
- Author Index
- 
- AND

---

---

---

---

---

---

---

---

- (\*)
- (truncation)
- Preview/Index
- History
- Clipboard
- Cubby
- **free full text[sb]** - Citations that include a link to a free full-text article.
- **full text[sb]** - Citations that include a link to a full-text article

---

---

---

---

---

---

---

---

# Cubby



---

---

---

---

---

---

---

---

- **Summary**
- **Brief** ( )
- **Abstract** ( )
- **Citation** ( )+  
MeSH
- **MEDLINE** ( )
- **ASN.1** (Abstract Syntax Notation)

---

---

---

---

---

---

---

---

- **Send to** (text, file, e-mail, clipboard)
- (Links)
- **Related articles**

---

---

---

---

---

---

---

---



---

---

---

---

---

---

---

---

## Clipboard

■ Чтобы добавить записи в Clipboard:

- 1: Click on the check box to the left of the citation.
- 2: Select **Clipboard** from the Send menu.
- 3: Click the **Send to** button.

---

---

---

---

---

---

---

---

## E-Mail

■ Отправить результаты по E-Mail :

- 1: выбрать **E-Mail** из Send to menu
- 2: Click the **Send to** button.
- 3: Можете добавить ваш текст в сообщении.
- 4: Ввести адрес e-mail .
- 5: Click the **Mail** button.

---

---

---

---

---

---

---

---

## BioMail

- <http://www.biomail.org/>

---

---

---

---

---

---

---

---

- - Randomized Controlled Trial, Clinical Trial, Multicenter Study, meta-analysis

---

---

---

---

---

---

---

---

“ ”  
**(Clinical Queries)**

- “ ”
- : , ,
- ( ) ( )
- ( )

---

---

---

---

---

---

---

---




---

---

---

---

---

---

---

---

---

---

---

---




---

---

---

---

---

---

---

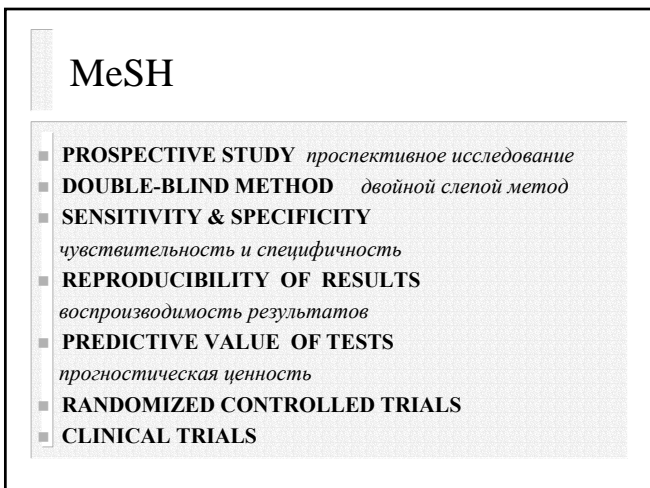
---

---

---

---

---




---

---

---

---

---

---

---

---

---

---

---

---

- prospective studies/
- large samples of patients/
- randomized/
- blinded/
- controlled/

---

---

---

---

---

---

---

---

- **Spelling/**  
randomized (US) /randomised (UK)
- **Terminology /**  
double-blind (US)/ sham, double-dummy (Europe)

---

---

---

---

---

---

---

---

- clinical trial (pt)
- double blind\* (text)
- OR placebo (text)
- randomized controlled trial (pt)
- OR drug therapy (MeSH)
- OR therapeutic use
- OR random\* (text)

---

---

---

---

---

---

---

---

- **Sensitivity** (text)
- *explode sensitivity and specificity* (MeSH)
- *OR predictive value* (text)
- *explode sensitivity AND specificity* (MeSH)
- *OR all sensitivity* (text)
- *OR diagnosis* (subheading)
- *OR diagnostic use* (subheading)
- *OR specificity* (text)

---

---

---

---

---

---

---

---

- **Subheadings/**
- ETIOLOGY - *этиология*
- CHEMICALLY INDUCED - *химически вызванные*
- ADVERSE EFFECTS- *побочные эффекты*
- POISONING - *отравление*
- TOXITY - *токсичность*
- **Explode MeSH**
- EPIDEMIOLOGY STUDY CHARACTERISTICS
- COHORT STUDIES/
- PROSPECTIVE STUDIES/
- LONGITUDINAL STUDIES/

---

---

---

---

---

---

---

---

**(2)**

- **risk** (text)
- **case-control studies** (MeSH)
- *OR cohort* (text)
- *explode cohort studies* (MeSH)
- *OR exp risk* (MeSH)
- *OR adds ratio:* (text)
- *OR relative risk* (text)
- *OR case control:* (text)

---

---

---

---

---

---

---

---

<ul style="list-style-type: none"> <li>■ <b>Subheadings</b></li> <li>MORTALITY</li> <li>EPIDEMIOLOGY</li> </ul>	<ul style="list-style-type: none"> <li>■ <b>Textwords</b></li> <li>PROGNOSIS</li> <li>PROGNOSTIC</li> <li>COHORT STUDIES</li> </ul>
<ul style="list-style-type: none"> <li>■ <b>MeSH Headings</b></li> <li>MORTALITY</li> <li>MORBIDITY</li> <li>PROGNOSIS</li> </ul>	

---

---

---

---

---

---

---

---

**(2)**

<ul style="list-style-type: none"> <li>■ <b>exp cohort studies</b> (MeSH)</li> <li>■ <b>prognosis</b> (MeSH)</li> <li>■ <b>OR survival analysis</b> (MeSH)</li> </ul>
---

---

---

---

---

---

---

---

---

<ul style="list-style-type: none"> <li>■ <b>MeSH</b></li> <li>Costs and cost analyses</li> <li>Cost allocation</li> <li>Cost control</li> <li>Cost of illness</li> <li>Health care costs</li> <li>Health expenditures</li> </ul>	<ul style="list-style-type: none"> <li>■ <b>Subheadings</b></li> <li>Economics</li> <li>■ <b>Textwords</b></li> <li>Cost:</li> <li>Economic:</li> </ul>
--	---

---

---

---

---

---

---

---

---

(1)

- use multiple DBs/
- different kinds of DBs/
- extent years of search /
- subheadings/
- terms definitions /
- MeSH+textwords /

---

---

---

---

---

---

---

---

(2)

- avoid AND NOT /  
AND NOT
- terms from found articles/
- related terms/
- author, location, study, manufacturer names/
- opposites/

---

---

---

---

---

---

---

---

- Health Care Resources on the Internet: A Guide for Librarians and Health Care Consumers/ Ed. M.Sandra Wood. NY,2000
- PDQ. Evidence-Based Principles and Practice/ Ann McKibon, Angela Eady, Susan Marks. Hamilton, 1999

---

---

---

---

---

---

---

---

## INTERNET

[ibra@zadar.net](mailto:ibra@zadar.net)

2004

### 1) Internet – HON

#### Health on the Net Foundation

<http://www.mig.rssi.ru/> [Medical Information Group]

<http://www.hon.ch/HONcode/> [HONcode - English]

<http://www.hon.ch/HONcode/Russian/> [HONcode –

]

"Health On the Net"

(HONcode).

WEB-

8

HON-

WEB-

WEB-

WEB-

HON- "Health On the Net" WEB- (HON- )

World-Wide Web.

HON- WEB- Internet

- 
1. WEB-
  - 2.
  3. WEB- WEB-
  - 4.
  5. /
  6. ( ) WEB-
  7. WEB-

WEB-

8.

2)

**Criteria for Accessing the Quality of Health Information on the Internet  
(Health Information Technology Institute of Mitretek Systems, Inc.)**

<http://hitiweb.mitretek.org/docs/criteria.html>

<http://hitiweb.mitretek.org/docs/policy.html>

- ( ) , , , , ,
- ( ) , , , , ,
- ) ( , , , , , )
- ( , , , , , )
- ( , , , , , )
- ) ( , , , , , )

**Criteria for Evaluating Internet Health Information**

- **Credibility:** includes the source, currency, relevance/utility, and editorial review process for the information.
- **Content:** must be accurate and complete, and an appropriate disclaimer provided.
- **Disclosure:** includes informing the user of the purpose of the site, as well as any profiling or collection of information associated with using the site.
- **Links:** evaluated according to selection, architecture, content, and back linkages.
- **Design:** encompasses accessibility, logical organization (navigability), and internal search capability.
- **Interactivity:** includes feedback mechanisms and means for exchange of information among users.
- **Caveats:** clarification of whether site function is to market products and services or is a primary information content provider.

**3) Internet Healthcare Coalition ( - )**

Internet Healthcare Coalition

:



Web –  
**L.Larsson. Quality of Information On and Off the Web – A Checklist**

<http://courses.washington.edu/~hs590a/modules/33/quality33.html>

**WWW**

-	1	2	3	4
URL				
(Home page)				
(mailto:)				
(				
)				
( , )				
)				
/				
/				
( , )				
(Site Map)				
/				
( )				
, ...				
/				

) (				
( / , “ ”)				
/				
( )				
- - - “ ” -“ ” -				
/ ?				

[www.medobraz.ru](http://www.medobraz.ru)  
[www.mednet.ru](http://www.mednet.ru)  
[www.osdm.ru](http://www.osdm.ru)  
[www homeopatica.ru](http://www.homeopatica.ru)  
[www psychiatry.ru](http://www.psychiatry.ru)